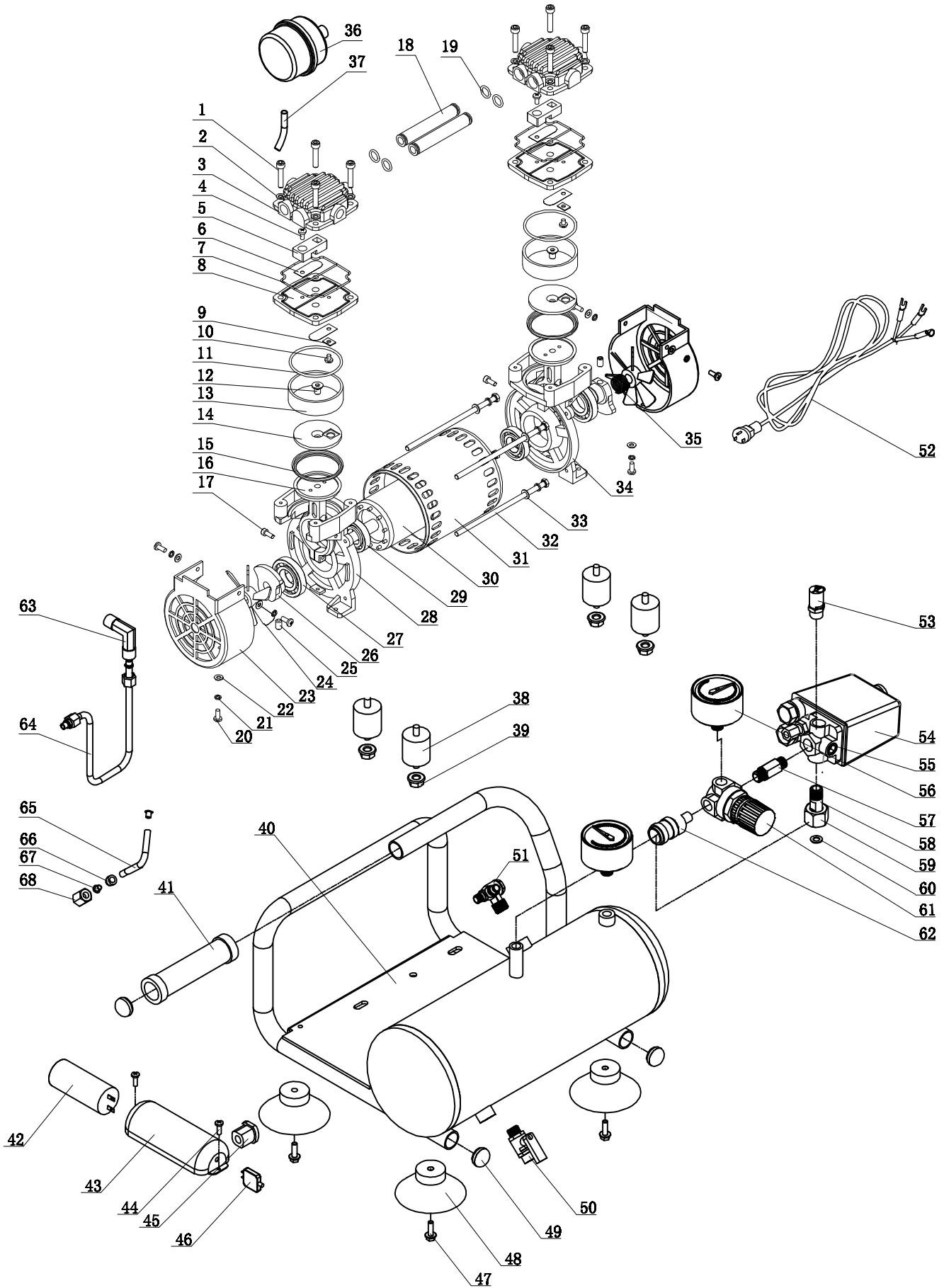


AC 4504



AC4504 parts list

Part no.	Item no.	Qty.	Description
01	203010.003	8	Screw
02	205010.001	8	Cushion
03	311111.001	2	Cylinder Head
04	203014.003	2	Screw
05	315111.001	2	Limit Range Implement
06	315211.002	4	Valve Block
07	210003.001	2	Seal
08	315311.002	2	Valve Board
09	315511.003	2	Valve plate clamp
10	203014.003	2	Screw
11	210002.004	2	O-Ring
12	203012.003	2	Screw
13	311311.002	2	Cylinder
14	312111.001	2	Valve Board
15	312711.001	2	Piston Cup
16	313112.002	2	Connecting Rod
17		2	Screw
18	311511.002	2	Gas-guide Tube
19	210002.002	4	O-ring
20	203014.001	6	Screw
21	205020.002	6	Cushion
22	205010.019	6	Flat washer
23	323211.001	2	Wind Scooper
24	323112.001 323112.002	2	Fan
25	203017.001	2	Screw
26	313411.001	2	Crank
27	208001.041	2	Bearing
28	314111.001	1	Left Crankcase
29	208001.051	2	Bearing
30	321311.002	1	Motor Rator
31	321111.004	1	Motor Stator
32	201011.009	4	Bolt
33	205020.003	4	Flat washer
34	314111.002	1	Right Crankcase
35	211001.001	2	spring
36	353112.001	1	Air Filter
37	341111.002	1	Hush Pipe
38	352212.001	4	Shock Pad
39	204011.002	4	Nut
40	351111.019	1	Horizontal Tank
41	352113.002	1	Handle Sleeve
42	324111.001	1	Capacity
43	324311.001	1	Capacity Cover
44	203014.002	2	Screw
45	326211.003	1	Power Cord Buckle
46	324212.014	1	Protector
47	201012.011	2	scew
48	352211.001	4	Foot Pad
49	345411.002	2	Apertural Plug
50	333611.001	1	Ball Valve
51	333511.001	1	Check Valve
52	334111.002	1	Power Cord
53	333111.001	1	Safty Valve
54	331111.004	1	Pressure Switch
55	203017.007	1	Choke plug
56	332111.008	2	Pressure Gauge
57	343211.001	1	double joint
58	342312.001	1	Flexible Joint nut
59	342311.001	1	Flexible Joint bolt
60	316611.001	2	Gasket
61	333311.001	1	Regulator Valve
62	342111.002	1	Quick Connect
63	343511.003	1	Elbow
64	341211.001	1	Exhaust Pipe(AI)
65	341111.001	1	Unloading Pipe
66	344111.001	1	Cutting Sleeve
67	344211.001	2	Lining
68	344311.001	1	Nut